

Mr. Bockman

Please tell us a little about the  
history of this wood shop.  
Tell your story.

<http://woodworkingteachers.com/default.aspx?q=posts&t=1942>

# Franklin Phonetic School

- **Be safe**
- **Be respectful**
- **Be responsible**



You will practice all of these character traits during wood shop!

## Class rules

1. Follow all the rules... especially the SAFETY rules!
2. Do not leave the room without asking.
3. Whenever you do get to leave the room... always sign out and in some cases, office for example, don't forget to use the hall pass. Bathroom in elementary building only!
4. If you can't choose a project or think up your own project, I will assign a project that you may not like. New students and 6<sup>th</sup> graders always start with the puzzle. Experienced students help the beginners.
5. As you begin working, if you get anything out.... (tools, templates, sandpaper, pencils, glue, dowel, projects, broom & dustpan, etc...) please put them back!
6. If you start something... please have the decency to finish it before moving on to another project, unless I give permission otherwise.
7. Help everyone by keeping the room clean and orderly.
8. Put your name on every project piece and always place it on the shelves in or under your own numbered can. Put your name on the can so I can do project checks. Also put your name on anything saved on the computer so I can delete it later.
9. Do your own clean up... then pitch in to help where needed, but don't rely on others to clean up after you.
10. Do not stand by the door at the end of class and don't yell out the door or window.

## Class rules

11. **Keep the gorilla glue off the tables and machines!**
12. **Do not use too much masking tape!**
13. **Put pens into the pen drawer!**
14. **Do not climb up on stools to get things off the shelves. Why do you think I put them up high. Let me get things down for you.**
15. **Do not climb up the ladder to sit.**
16. **If you can't use the wood burner, X-Carve or Laser correctly, then you will lose the privilege. And please do not use the X-Carve squares for wood burning.**
17. **Don't burn .... or route things into the table. Don't talk to others while the wood burner is running. All the tip time adds up to replacing it sooner and we all want to use it too!**
18. **Brush the wood burner tip before and after use. Be mindful that I can't see everywhere at the same time and I can't help everyone at the same time.**
19. **Turn cutting board wood the right direction so all the pieces are the same height.**
20. **Don't trace project templates at the center of the wood. Move it to an edge/corner to save materials and cluster tracings together to save wood.**
21. **Hang hats and backpacks near the door.**
22. **Be careful using the computer and the X-Carve/Laser.**

**23. Use Google search properly. Never open anything that you know is something you should stay off of at school... games, bad images, etc...**

**24. Don't use any materials without asking first!**

- **With more students in woodshop, we will be using a lot more materials.**

- **Let's talk a little bit about the materials we will use...**

- **Solid wood**

- **Melamine on particle board & MDF**

- **Veneer on plywood and MDF**

- **MDF**

- **Particle board**

- **Prefinished wood**

**And use up the small scraps first!**

- **Be careful with glue & mineral oil so we don't run out.**

**25. Line up the keyway on the lathe tail stock properly.**

- **Learn & understand how to adjust the lathe dust control.**

- **Learn & understand how to use all the blast gates.**

- **Learn & understand how to adjust the drill press dust inlets.**

**26. Don't put garbage into the dust system. No food, empty packages, or blocks of wood.**

**27. Put your clamps away after your cutting board is dry! Make sure the clamps are facing the proper way so they can't fall on anyone.**

**29. If we all work together... it's going to be great!**

**Let's now pause here to go see the nicely organized wood storage.** 5

# **WARNING**

## **General Safety in the Woodshop**

**What  
Time  
Is  
It?**



***It's  
Always  
Time  
for  
Safety***

***A few seconds is all it takes  
to do it right.***

# NOTICE

**Get approval for  
anything and  
everything you  
plan to do.**

# THINK

Follow all  
instructions and  
safety rules.

# SAFETY FIRST

Develop a  
receptive  
attitude  
toward safety.





**Always be  
aware of your  
surroundings.**



# CAREFUL

**Dress appropriately  
and wear all the  
shop safety apparel.**

# Appropriate shop appearance and apparel.

**Remove or secure ties.**

**Tuck in shirt tails.**

**Roll up sleeves.**

Student accident!



# Appropriate shop appearance and apparel.

Take off  
rings and  
dangling  
jewelry.



I pity  
the fool

# Appropriate shop appearance and apparel.

Take off  
rings and  
dangling  
jewelry.



who don't  
take off  
the jewelry

# Appropriate shop appearance and apparel.

## Take off rings and dangling jewelry.



**before  
they work  
on  
machines**

# Appropriate shop appearance and apparel.

Take off  
rings and  
dangling  
jewelry.



and who  
don't  
report all  
injuries

# Appropriate shop appearance and apparel.

## Take off rings and dangling jewelry.



no matter  
how slight  
they may  
seem.

# Appropriate shop appearance and apparel.

Take off  
rings and  
dangling  
jewelry.



**And  
stay in  
school!**

Appropriate shop  
appearance and apparel.

Take off  
rings and  
dangling  
jewelry.



**You May  
Want to  
Remove  
Rings**

Appropriate shop  
appearance and apparel.

Take off  
rings and  
dangling  
jewelry.

**You Must  
Remove  
Dangling  
Jewelry**



Appropriate shop  
appearance and apparel.

Take off  
rings and  
dangling  
jewelry.



# Appropriate shop appearance and apparel.

**You must protect feet by wearing closed shoes.**



Appropriate shop  
appearance and apparel.

**Don't  
wear  
open  
shoes!**



**You Can't  
Work With  
Open Shoes**

# Appropriate shop appearance and apparel.

## Don't wear open shoes!



**Appropriate shop  
appearance and apparel.**

**Secure back  
long hair.**

**You Can't  
Work Without  
Tying Back Long Hair**



# Appropriate shop appearance and apparel.

Ouch!

**Secure back  
long hair.**



See the  
news  
story  
about a  
[Florida  
teen.](#)



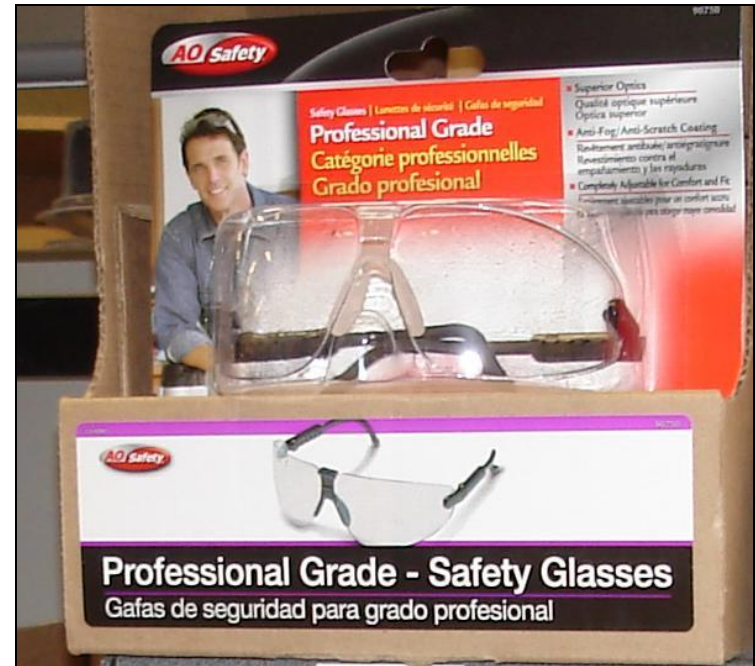
Appropriate shop  
appearance and apparel.

**Wear proper personal  
protective equipment.**



# Appropriate shop appearance and apparel.

You must always wear safety glasses.



# Appropriate shop appearance and apparel.

You must always wear safety glasses.



# Appropriate shop appearance and apparel.

**There is  
danger  
lurking  
in every  
corner.**



**Always wear safety glasses.**

Appropriate shop  
appearance and apparel.

**It's no  
mystery!**

**Eye Injuries  
are no fun!**



# Appropriate shop appearance and apparel.

**It's no  
mystery!**

**Eye Injuries  
are no fun!**



# **NOTICE**

**Make others  
aware of safety  
concerns.**

# NOTICE

The teacher says, "Be careful in the woodshop!"  
The teacher says, "Be careful in the woodshop!"  
The teacher says, "Be careful in the woodshop!"  
The teacher says, "Be careful in the woodshop!"  
The teacher says, "Be careful in the woodshop!"  
The teacher says, "Be careful in the woodshop!"  
The teacher says, "Be careful in the woodshop!"  
The teacher says, "Be careful in the woodshop!"

Hey Man!  
Be Careful  
in the  
Woodshop



# **CAUTION**

**Keep the floor clear  
of spills, chips, scraps,  
and other litter.**

**This old  
turn of the  
century  
shop has  
dangerous  
clutter.**



**KEEP WORK  
AREAS**

*Clean*

**KEEPING YOUR**

**WORK AREA**

**"CLEAN"**

**IS PART OF**

**YOUR JOB**

**ASSIGNMENT**

# THINK

**Operate machines  
only after you  
understand them and  
have permission.**

# NOTICE

**Don't lean or  
loungue on  
machines.**

# NOTICE

**It can break or  
knock machines  
out of adjustment.**

# **NOTICE**

**Don't crowd  
up around  
machines!**

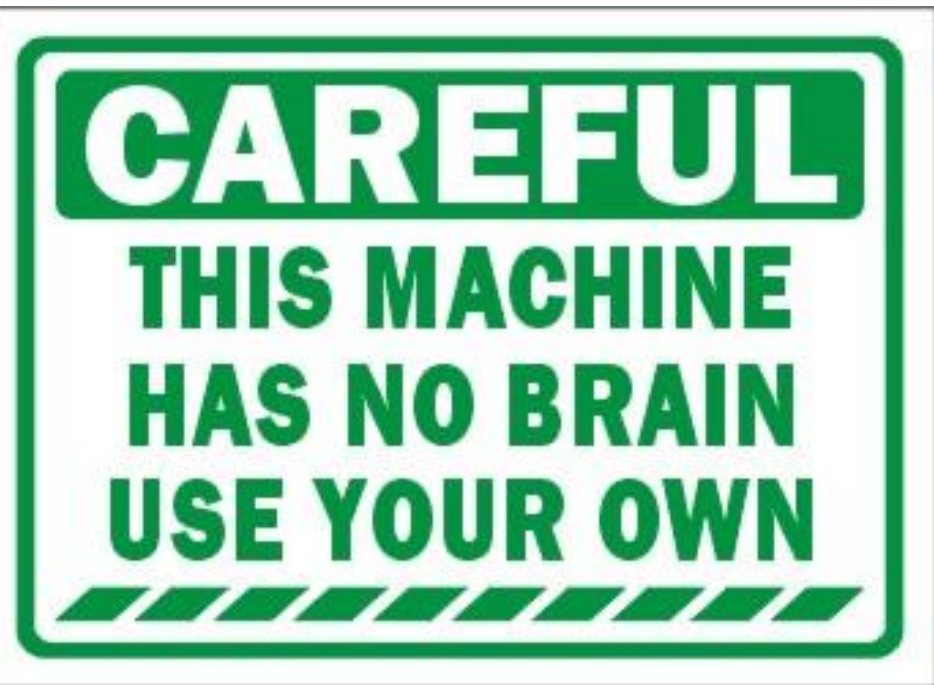
SawStop

# Use Guards



Be mindful of safety zones around the machines

Keep a safe distance  
between your hands  
and all moving parts.



Ouch!

Middle school student cuts off thumb on the bandsaw.<sup>45</sup>

# **CAUTION**

**Check and make all  
adjustments before  
applying the power.**

# **SAFETY**

## **FIRST**

**Let the teacher  
check any  
special set-ups.**

# NOTICE

**Disconnect the power before changing blades or cutters.**



Unplug the machine before beginning.

# CAREFUL

**Check to see that  
no one is in the way  
before turning on  
the machine.**

# CAUTION

*6" safety margin  
on the table saw!*



**Keep the  
minimum of  
a four inch  
safety margin  
between blades  
and hands.**

# CAUTION



Ouch!

# CAUTION



**And never  
reach for  
the scrap.**

A graphic of a warning sign. It features a black rectangular background with a central orange diamond shape. The word "WARNING" is written in bold, black, sans-serif capital letters across the center of the orange diamond.

**WARNING**

**Start and stop  
your own machine.**

A graphic of a warning sign. It features a black rectangular background with a central orange trapezoidal shape. Inside the orange shape, the word "WARNING" is written in large, bold, black, sans-serif capital letters.

**WARNING**

**Let the machine  
reach full speed  
before applying work.**

# ***UNDIVIDED ATTENTION***

**Give the machine  
your full attention.**

# ***UNDIVIDED ATTENTION***

**Don't look away  
or talk to others.**

# THINK

**Notify the teacher if  
anything breaks  
or malfunctions.**

# NOTICE

**Report machines  
that are not  
functioning properly.**

# THINK

Stay with  
machines until  
they stop.

**Make all  
adjustments with  
the power off.**

**Make sure  
switches are  
turned “OFF”  
before plugging  
in equipment.**



# Lockout /tagout rules and procedures

Malfunctioning  
machines  
must be taken  
out of service  
and not be  
used.

DO NOT USE any  
machine that has a  
locked switch with a  
DO NOT OPERATE  
tag on it.



# Fire safety rules and procedures

All portable fire extinguishers should be visually inspected monthly...



Gauge reads **EMPTY**. Replace or Recharge.



Gauge reads **FULL**. Unit is Fully Charged.

# Fire safety rules and procedures

But undergo a  
maintenance  
inspection  
annually.

Professional  
maintenance and  
inspection should  
take place every year.



[See More About  
The Fire Extinguisher](#)

Place oily  
rags into  
a covered  
metal  
container.



Uncovered  
finishing  
rags can  
spontaneously  
combust.



That  
means  
they  
can  
catch  
on fire.

[See The Fire Extinguisher](#)



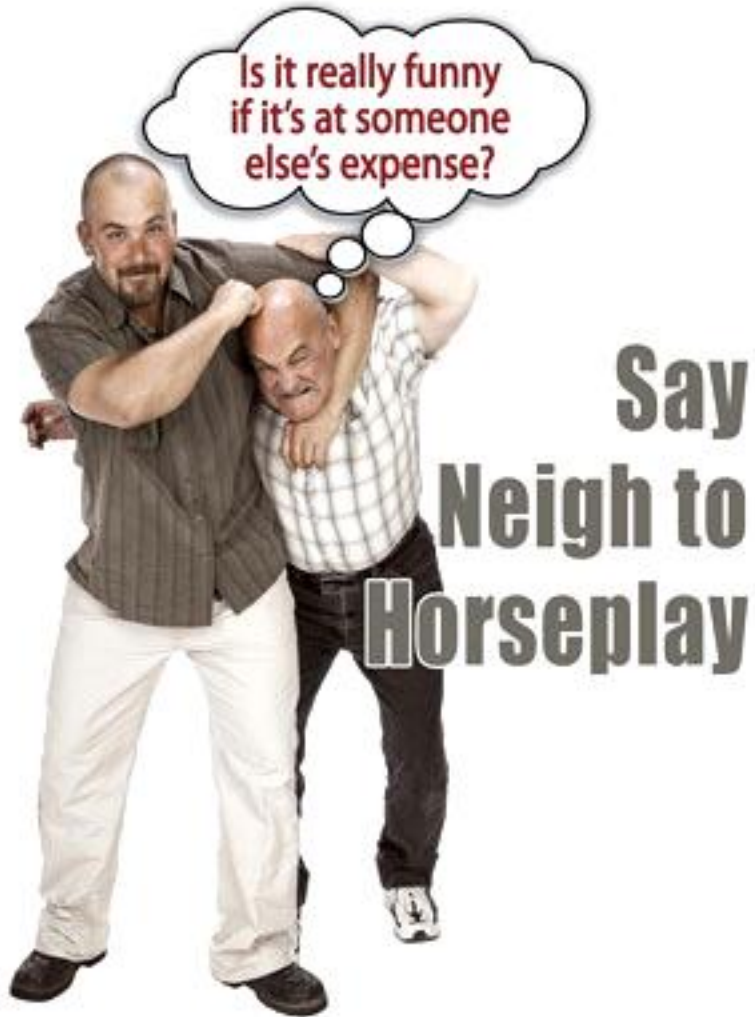
# SAFETY

## FIRST



Know the  
EMERGENCY EXIT  
routine.

# No Running or Horseplay in the woodshop!



# No Running or Horseplay in the woodshop!



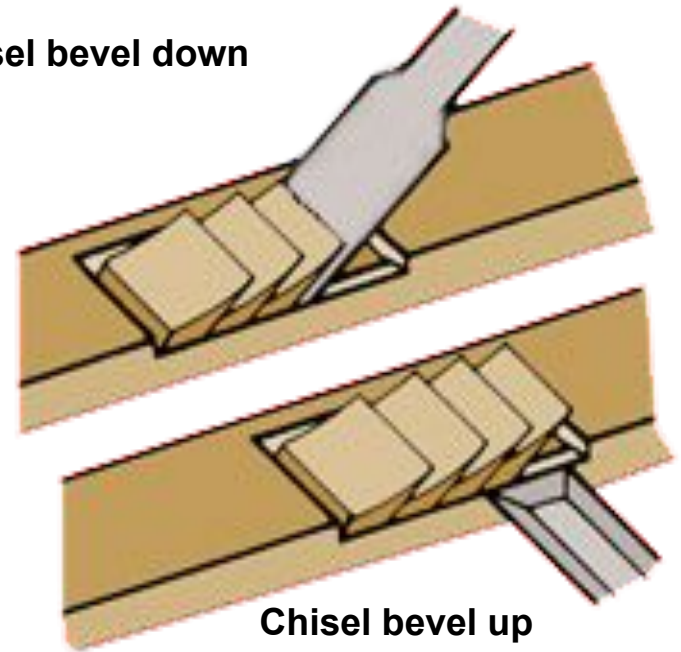
# Use the right **SIZE** and **TYPE** of tool for the job



The proper procedure when using the chisel.



Chisel bevel down



Follow the correct procedure for using each tool

# Keep cutting tools sharp and in good condition

Sharp tools  
are safer.



Do not use chisels as screwdrivers  
and screwdrivers as chisels or pry bars.

***Point edges  
away from  
yourself and  
others when  
carrying  
and using  
sharp tools.***



# THINK

Never carry  
tools in your  
pockets.

# Various types of abrasive tools include files and rasps.

It is unsafe to use a file or rasp without an approved handle.

Do not use tools with loose, cracked or missing handles.



Don't pry or hammer with a file.<sup>74</sup>

# Various types of abrasive tools include files and rasps.

It is unsafe to use a file or rasp without an approved handle.

Do not use tools with loose, cracked or missing handles.



Files are brittle and will shatter.

# SAFETY

## FIRST



**Select  
wrenches that  
fit properly.**

# SAFETY

## FIRST



**There is more  
control when you  
pull rather than  
push on wrenches.**



Use extreme  
caution when using  
compressed air.



**Don't use  
compressed  
air to dust  
yourself off.**



**The air is set very high (90 lbs.) to shoot nails.**

**This nail gun can shoot nails through solid oak.**





**The air is set very high (90 lbs.) to shoot nails.**

**Or even through your hand.**





**The air is set very high (90 lbs.) to shoot nails.**

**Be careful with compressed air.**



**The air is set very high (90 lbs.) to shoot nails.**

**Don't use compressed air to clean the shop.**

# THINK

Cleaning with  
compressed air can  
make dust go airborne.

# NOTICE

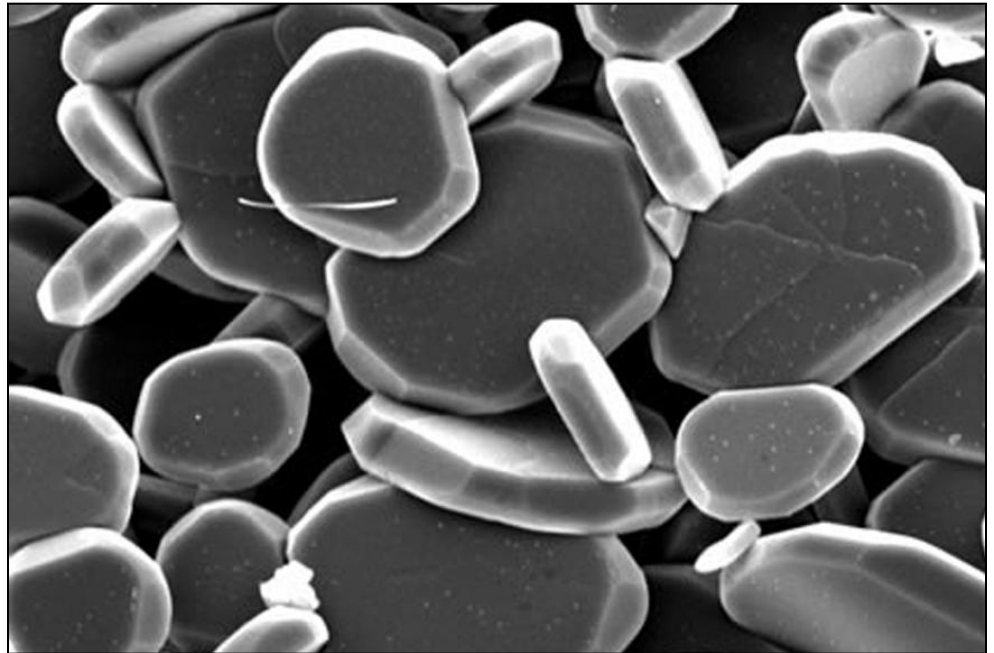
Long term health-related problems may result from exposure to dust in the woodworking shop

# Turn on the dust collectors.

The dust collection system filters out particles in the air as small as 5 microns.



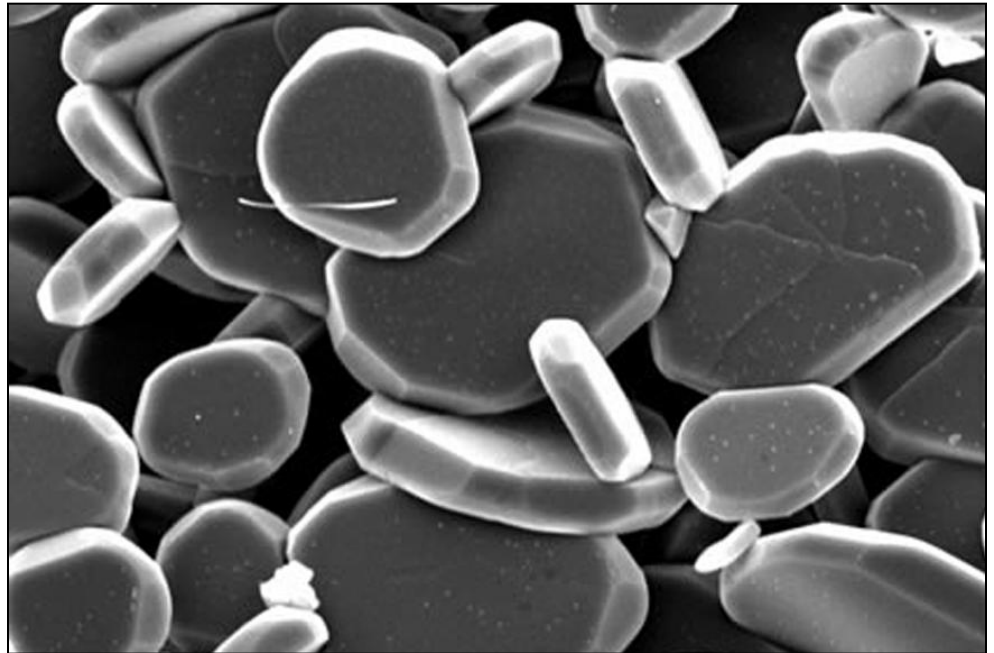
**Use appropriate  
dust masks.**



Close up of small 5 micron powder. 86

# Turn on the dust collectors.

The dust collection system filters out particles in the air as small as 5 microns.



Close up of small 5 micron powder. 87

Secure  
small  
work  
with a  
vise or clamp.



Return all tools to proper storage and report any broken or missing tools.

Put all tools and equipment away and close doors or drawers.



Use care when storing or handling long or heavy items.

Watch out for slivers.



Use proper lifting techniques

**Lift with  
the legs.**



Use proper lifting techniques

**Lift with  
the legs.**



Use proper lifting techniques



**Lift with  
the legs.**

**Avoid using the  
waist and back.**

Of all the injuries  
we've discussed,  
which injury do  
you think leads  
Arizona's list of  
reported injuries?

[See answer here](#)

## ***Copy down the vocabulary words from this slideshow...***

**OSHA-** stands for occupational safety and health administration, a government agency that oversees workplace safety issues.

**EPA-** stands for environmental protection agency, a government agency that oversees environmental issues.

**DNR-** stands for department of natural resources, a state agency that oversees natural resources within the states boundaries including lakes, streams, forests, etc....

**MSDS-** stands for material safety data sheets, informational documentation about chemicals kept and used in the workplace.

**Apparel-** occupational appropriate clothing used in a workplace.

**Personal protective equipment-** protective equipment including respirators, eye & ear protection, gloves, push sticks, machine guards, first aid kits and eye wash stations.

**Safety margins & safety zones-** space between hands and cutters and around machines and other workers for the purpose of safe operation.

**Lock out Tag out-** disconnecting and safely locking out the power to malfunctioning machines,

**Spontaneous combustion-** when combustible materials such as oil soaked cloth generates it's own heat and bursts into flames.

**Horseplay-** inappropriate & immature reckless behavior, acting with disregard of self and others personal safety.

**Compressed air-** air molecules forced or squeezed into a confined space, when allowed to escape can do work or cause harm if used improperly.

**Microns-** very small particles, easy to breath in microscopic dust.

# The End

ABC's of Hand Tools



**Safetymatters**